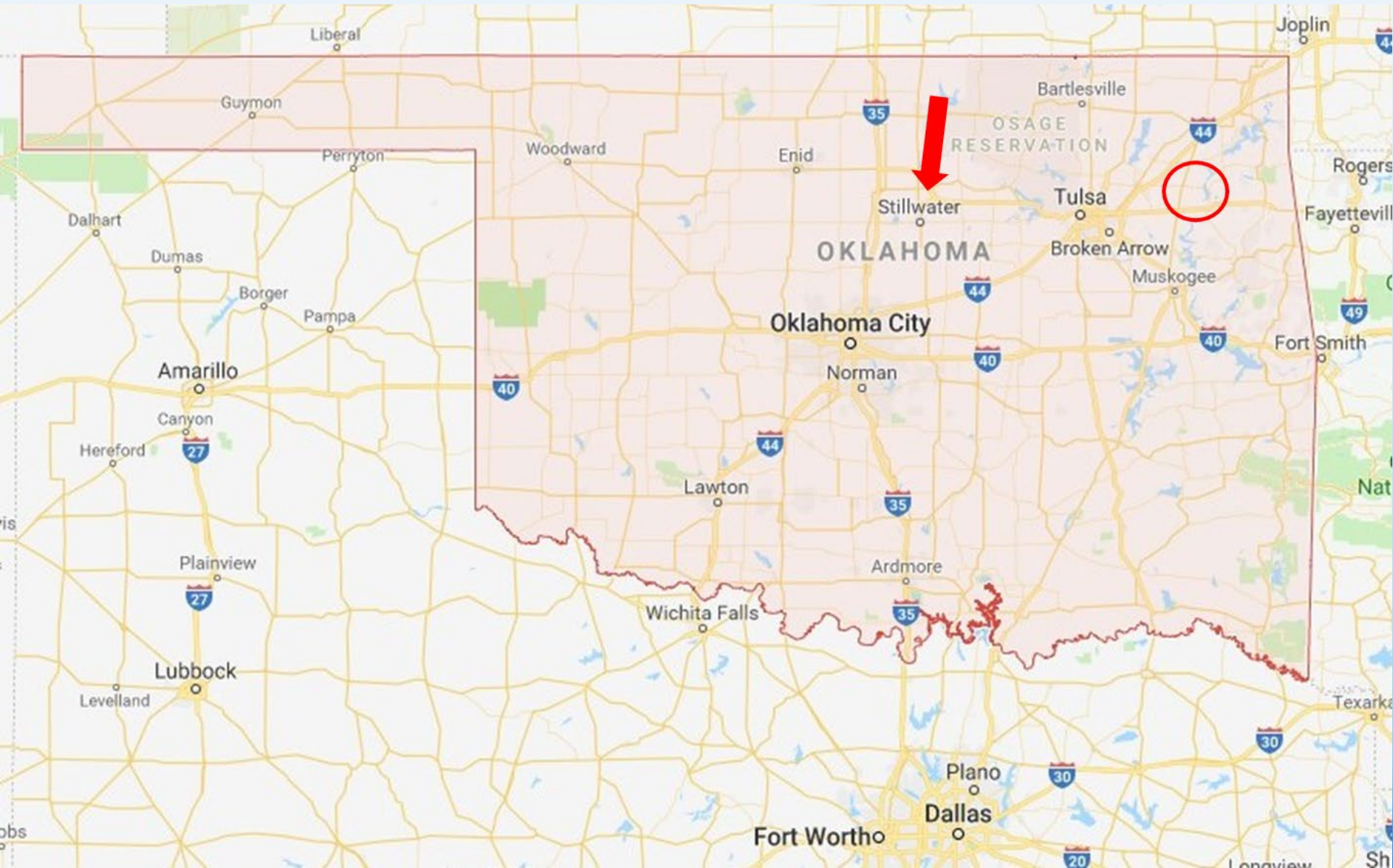


# Will Harges, Research Assistant

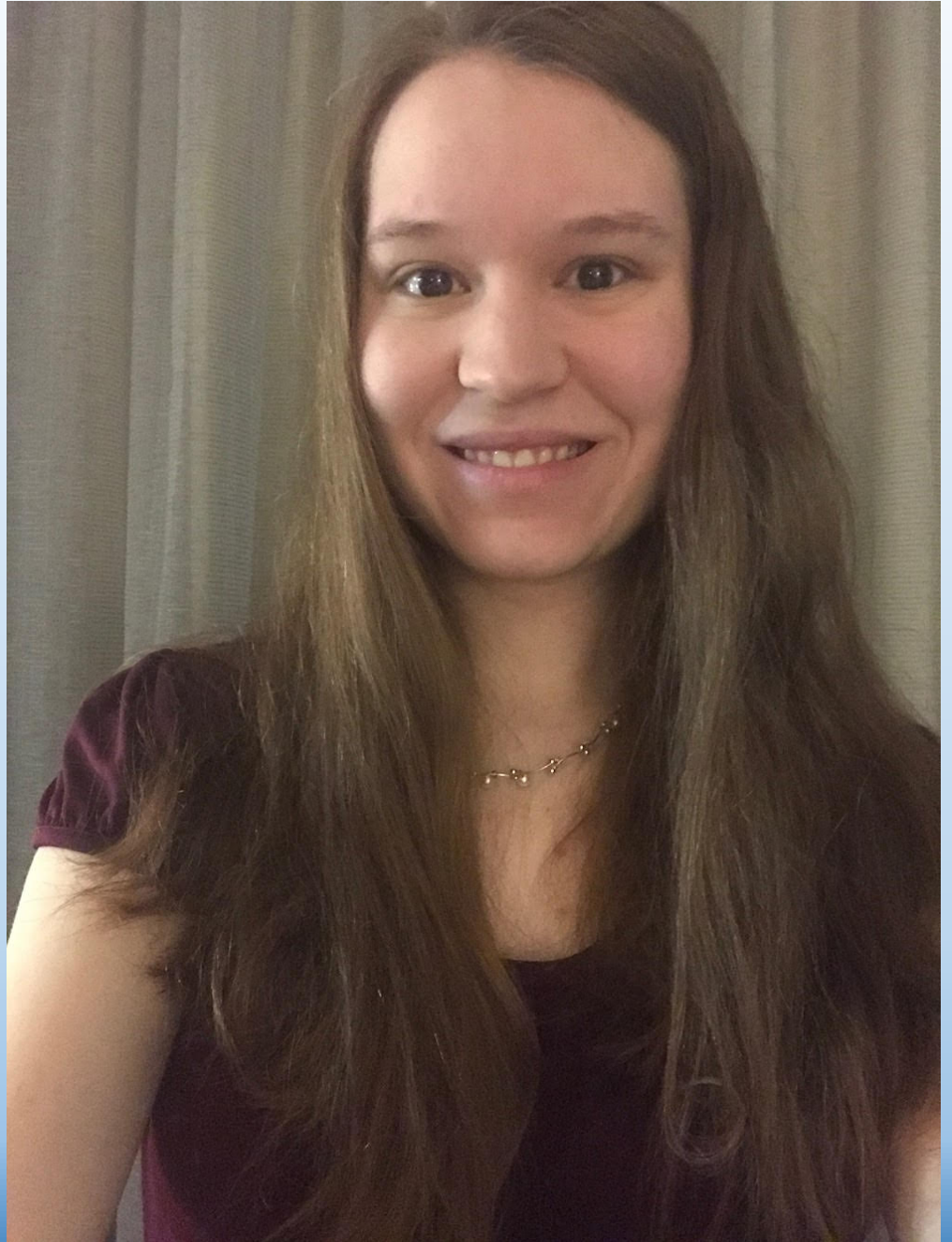
SFNMC Advisory Council

October 31, 2018

# Where I am from:



# Family





# Family

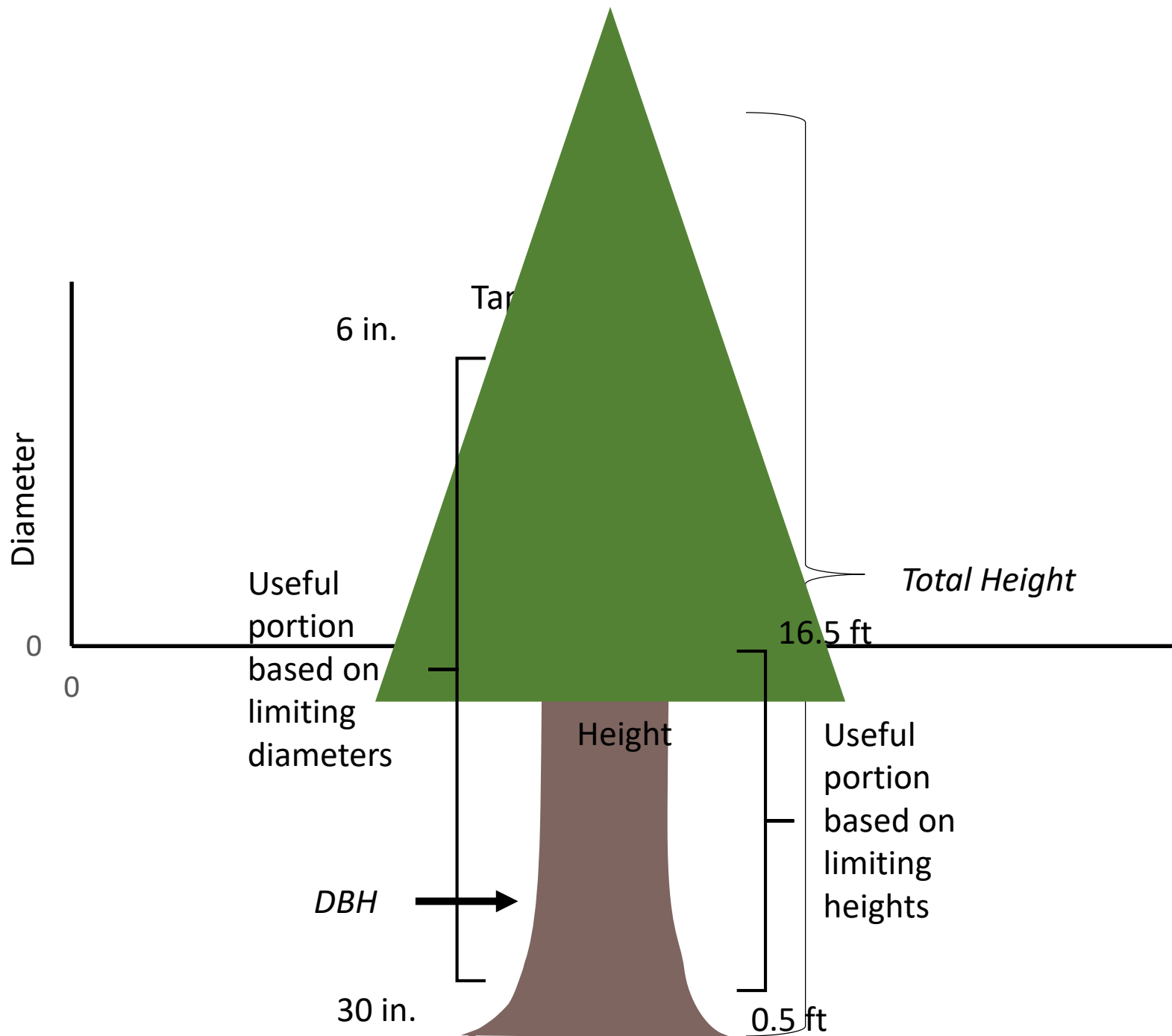


# Personal Interests

- Hunting
- Fishing
- Gardening
- Beekeeping
- Good literature
- Statistics/Math
- Mentoring
- Philanthropy (Altruism)

# Education

- BS in Natural Resource Ecology and Management (Forestry)
- MS in Natural Resource Ecology and Management (Forest Biometrics)
  - Green weight, taper & volume equations for loblolly pine in Oklahoma
  - Derived new compatible equations for volume and taper prediction
  - One paper published so far



# Work History

- Lots of varied jobs ranging from cleaning to machining to beekeeping
- Intern/Farm Hand, Oklahoma Forestry Services Forest Tree Improvement Center (Idabel, OK)
- Forestry Intern, Vermejo Park Ranch (Raton, NM)
- Graduate Research Assistant, Oklahoma State University (Stillwater, OK)
- Research Associate, Dougherty and Dougherty Forestry Services



# Exposure So Far

- Fumigation trials
- Alternative chemistries for weed, fungal, and insect control
- Chemistries to improve seedling productivity
- Seedling survival and storability
- Seedling growth models
- SFNMC member meetings
- Problem diagnosis
- Project Planning
- Reading

# Some Thoughts

- Previous experience translates well
- It has been neat to see what this job looks like
- Value addition
  - Statistics
  - Ability to translate research into common language

# Looking Forward

- I am excited to work with the SFNMC to answer research questions that solve your day to day problems.